

## Product Application

The FA secure floor anchor clip connects a wall stud to the floor. Designed to resist torsional, horizontal, and vertical loads, FA secure clip is provided in 68 mil and 118 mil to meet any design criteria.

Clips come packaged in durable buckets for convenient handling on the jobsite.

## Features and Benefits

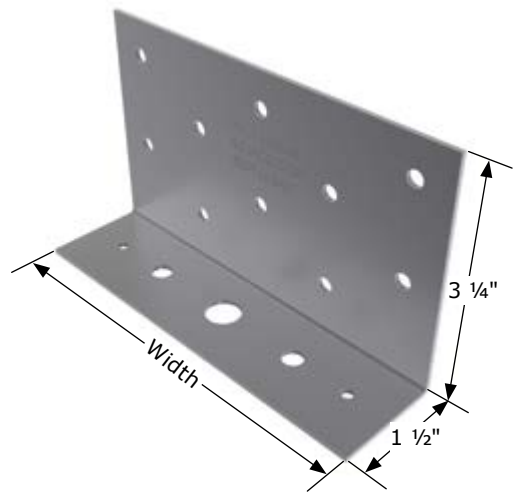
- Available in 68 mil and 118 mil
- Variety of lengths available
- Pre-punched guide holes
- Optional plate washer for heavy duty applications

## Material Composition

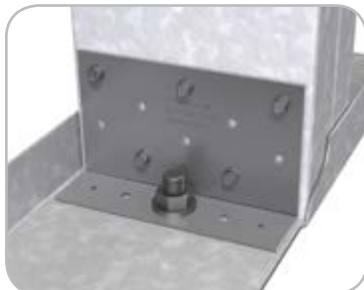
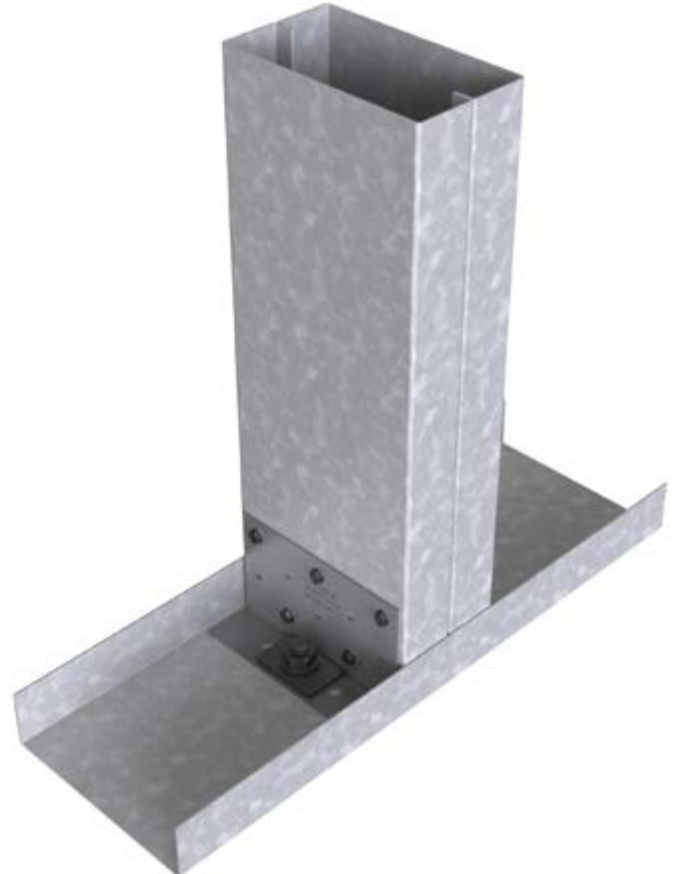
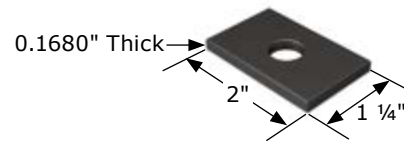
- Mill certified steel
- ASTM A653/A653M
- Main flange guide holes are 0.220" in diameter (#12 fasteners)
- Small flange guide holes are 0.30" in diameter (1/4" anchor)
- Center guide hole is 0.5625" in diameter (1/2" anchor)
- 1 1/4" x 2" plate washer is 168 mil with 5/8" hole
  - 68 mil
    - 57 ksi yield strength
    - 65 tensile strength
    - G90 galvanized coating
  - 118 mil
    - 57 ksi yield strength
    - 65 ksi tensile strength
    - G90 galvanized coating

## Quantity / Order Information

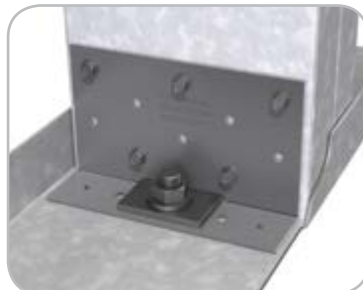
Part No.	Width	Qty / Bucket	Lbs / Bucket
FA337-68	3 3/8"	100	31
FA550-68	5 1/2"	50	26
FA750-68	7 1/2"	50	35
FA950-68	9 1/2"	50	44
FA1150-68	11 1/2"	50	53
FA337-118	3 3/8"	50	29
FA550-118	5 1/2"	50	47
FA750-118	7 1/2"	35	45
FA950-118	9 1/2"	25	41
FA1150-118	11 1/2"	25	50



**PW-168 Plate Washer**



**Installation without washer**



**Installation with washer**