

SSWT - Splicing Slide Clip and Rigid Wall Tie

Product Application

The SSWT splicing slide clip and rigid wall tie attach the bypass curtain wall stud to the building structure. This allows for vertical deflection while securely connecting another wall stud.

The insert is attached to the clip making installation quick, easy, and efficient. Clips come packaged in durable buckets for convenient handling on the jobsite.

Features and Benefits

- Unique insert allows for 2" total vertical deflection
 - Deflection of 1" up and 1" down
- Large insert piece for easy installation
- Pre-punched holes for #10 framing screws
 - Screws are provided
- Maintains lateral rigidity
- Meets or exceeds building code criteria

Quantity / Order Information

Part No.	Left / Right Handed	Width	Qty/ Bucket	Lbs/ Bucket
SSWT-600	(L) or (R)	6"	25	42
SSWT-800	(L) or (R)	8"	25	54
SSWT-1000	(L) or (R)	10"	20	52

All SSWT slide clips include insert. Additional lengths available upon request.

Allowable Loads

Part No.	Stud Properties			F1 Allowable Loads (lbs)	
	Mil	Gauge	Fy (ksi)	3 #10 Screws* 3 #10 Screws	(6) #10 Screws* 3 #10 Screws
SSWT	33EQS	20	57	603	603
	33	20	33	530	530
	43EQS	18	57	952	952
	43	18	33	789	789
	54	16	50	1378	1378
	68	14	50	1378	1378
	97	12	50	1378	1378
	118	10	50	1378	1378
Maximum Allowable Clip Capacity				Max F1 = 1378 lbs	

* Upper half screw quantity listed first.

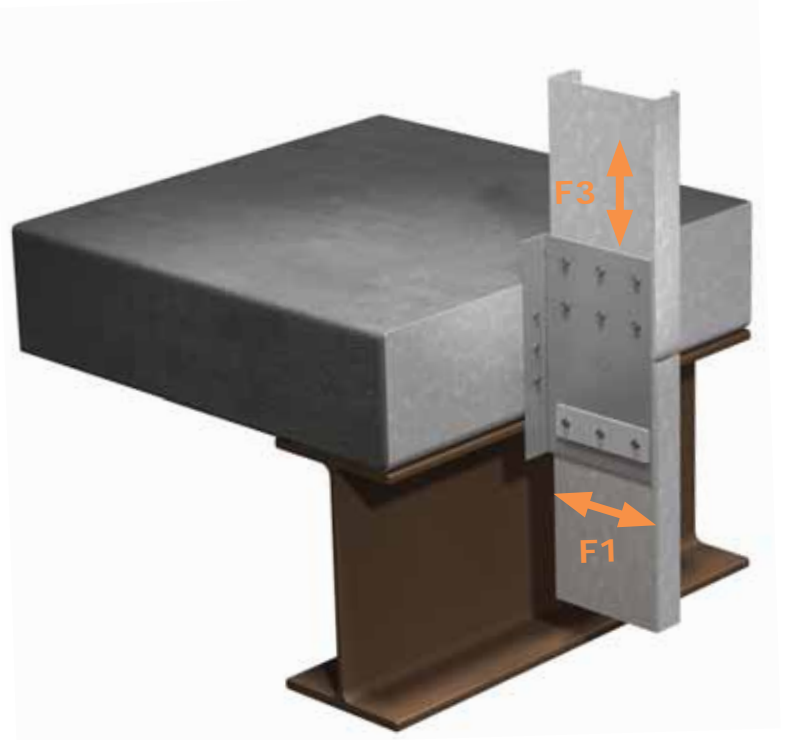
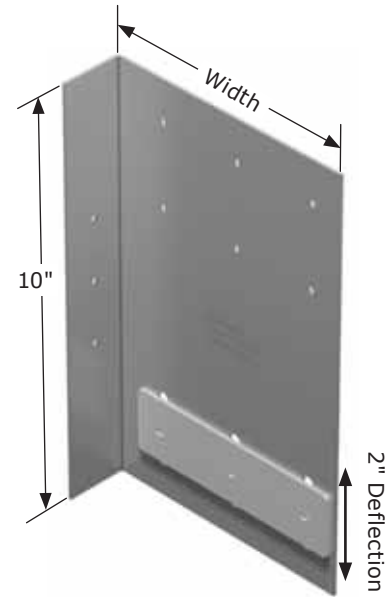
Part No.	Stud Properties			F3 Allowable Loads (lbs) for Upper Half	
	Mil	Gauge	Fy (ksi)	3 #10 Screws	6 #10 Screws
SSWT	33EQS	20	57	603	1206
	33	20	33	530	1060
	43EQS	18	57	952	1904
	43	18	33	789	1578
	54	16	50	1602	2350
	68	14	50	2266	2350
	97	12	50	2350	2350
	118	10	50	2350	2350
Maximum Allowable Clip Capacity				Max F3 = 2350 lbs	

Table Notes

1. Allowable loads have not been increased for wind, seismic activity, or other factors.
2. The allowable loads are based on the steel properties of the members being connected, per AISI S100.
3. The nominal strength of the screw must be at least 3.75 times the allowable loads.
4. Penetration of screws through joined materials should not be less than three exposed threads. Install and tighten screws in accordance with the screw manufacturer's recommendations.

Material Composition

- Mill certified steel
- ASTM A653/A653M
- Clip
 - 68 mil material thickness
 - 57 ksi yield strength
 - 65 ksi tensile strength
 - G90 galvanized coating
- Insert
 - 97 mil material thickness
 - 57 ksi yield strength
 - 65 ksi tensile strength
 - G90 galvanized coating



5. Screw shear capacities are based on allowable strength design (ASD) and include a safety factor of 3.0.
6. Allowable loads indicated on the table(s) are for force in single direction only. The designer shall use the combined forces check as required by AISI S100 if more than one force is applied to the connection.
7. The designer shall check the bending in the short leg of clip.