



Design No. U429 BXUV.U429 Fire Resistance Ratings - ANSI/UL 263

Page Bottom

Design/System/Construction/Assembly Usage Disclaimer

- Authorities Having Jurisdiction should be consulted in all cases as to the particular requirements covering the installation and use of UL Certified products, equipment, system, devices, and materials.
- Authorities Having Jurisdiction should be consulted before construction.
- Fire resistance assemblies and products are developed by the design submitter and have been investigated by UL for compliance with applicable requirements. The published information cannot always address every construction nuance encountered in the field.
- When field issues arise, it is recommended the first contact for assistance be the technical service staff provided by the product manufacturer noted for the design. Users of fire resistance assemblies are advised to consult the general Guide Information for each product category and each group of assemblies. The Guide Information includes specifics concerning alternate materials and alternate methods of construction.
- Only products which bear UL's Mark are considered Certified.

BXUV - Fire Resistance Ratings - ANSI/UL 263

BXUV7 - Fire Resistance Ratings - CAN/ULC-S101 Certified for Canada

[See General Information for Fire-resistance Ratings - ANSI/UL 263](#)

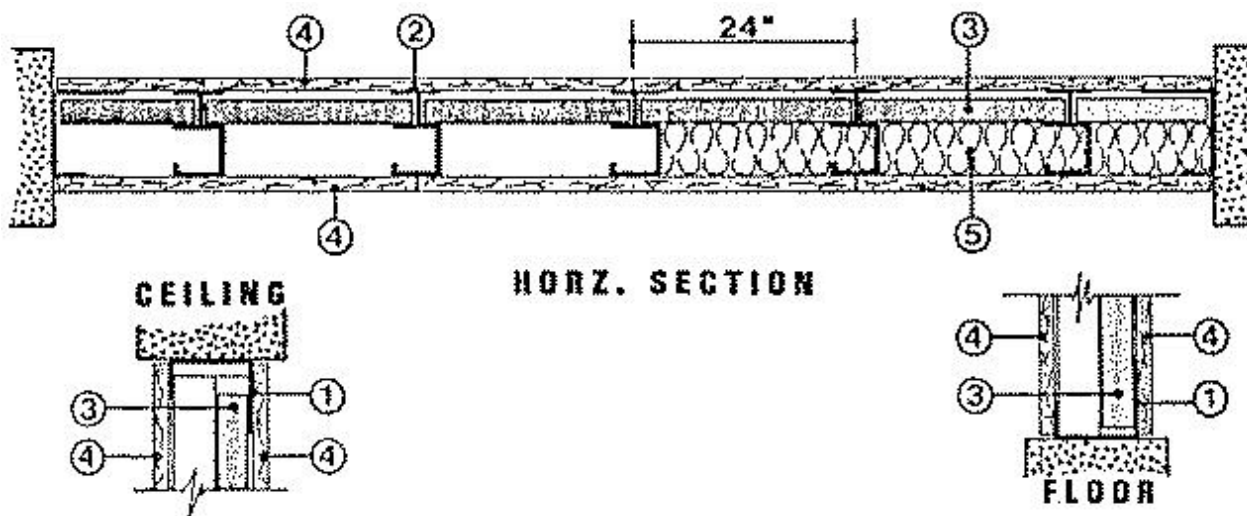
[See General Information for Fire Resistance Ratings - CAN/ULC-S101 Certified for Canada](#)

Design No. U429

October 13, 2015

Nonbearing Wall Rating – 2 Hr

* Indicates such products shall bear the UL or cUL Certification Mark for jurisdictions employing the UL or cUL Certification (such as Canada), respectively.



1. **Floor and Ceiling Runners** — "J" -shaped, min. 2-1/2 in. wide with unequal legs of 1 in. and 2-1/4 in., fabricated from min. 25 MSG galv steel. Runners attached to structural supports with steel fasteners located not more than 2 in. from ends and not more than 24 in. OC.

1A. **Steel Framing Members (Floor, Side and Ceiling Runners)*** — As an alternate to Item 1. "J"-shaped runner, min 2-1/2 in. deep, with unequal legs of 1 in. and min 2-1/4 in. fabricated from min 25 MSG galv steel (0.0179 in. bare steel thickness). Runners positioned with short leg toward finished side of wall. Runners attached to structural supports with steel fasteners located not greater than 2 in. from ends and not greater than 24 in. OC. Runners may be supplied with securement tabs for gypsum liner panels (refer to Item 3).

SCAFCO STEEL STUD MANUFACTURING CO — I-Stud Shaftwall Steel Framing System

2. **Steel Studs** — "C-T" or "C-H" shaped studs 1-5/8 in. wide by min. 2-1/2 in. deep, fabricated from min. 25 MSG galv steel. Cut to lengths 3/4 in. less than floor to ceiling height and spaced 24 in. or 600 mm OC.

2A. **Steel Framing Members (Steel Studs)*** — As an alternate to Item 2. For use with Item 1A - "I"-shaped studs fabricated from min 25 MSG galv steel, min 2-1/2 in. deep, 1-1/2 in. wide. Studs contain 3/4 in. wide by 2-1/4 in. high holding tabs spaced 2-3/4 in. OC. Cut to lengths 5/8 in. less than floor-to-ceiling height and spaced 24 in.

SCAFCO STEEL STUD MANUFACTURING CO — I-Stud Shaftwall Steel Framing System

3. **Gypsum Board*** — 1 in. thick gypsum wallboard liner panels, supplied in nom. 24 in. or 600 mm (for metric spacing) widths. Panels cut 1 in. less in length than floor to ceiling height. Vertical edges of the panels inserted into "T"-shaped section of C-T studs or "H" section of the C-H studs. Free edge of end panels secured to long leg of J runner with tabs in runner or 1-5/8 in. long Type S self-tapping bugle head steel screws spaced not more than 12 in. OC. When J-shaped runners (Item 1A) are supplied with securement tabs, free edge of end panels may be secured by bending the securement tabs, max 12 in. OC, to a 90 degree angle to securely friction-fit panels into J-shaped.

AMERICAN GYPSUM CO — Types AG-S, M-Glass

CERTAINTED GYPSUM INC — Types Shaftliner, EGRG Shaftliner, GlasRoc Shaftliner.

CONTINENTAL BUILDING PRODUCTS OPERATING CO, L L C — Type LGFCSL

GEORGIA-PACIFIC GYPSUM L L C — Types TP-6, DGUSL, and TRSL

NATIONAL GYPSUM CO — Types FSW, FSW-B, FSW-7, FSW-9

PABCO BUILDING PRODUCTS L L C, DBA PABCO GYPSUM — Types PG-10 and PG-10G

THAI GYPSUM PRODUCTS PCL — Type Shaftliner

4. **Gypsum Board*** — 1/2 or 5/8 in. thick, 4 ft wide, applied vertically and attached to studs and runners with 1 in. long Type S steel screws starting at 2 in. from the top and the bottom, and spaced max. 12 in. OC. Vertical joints are offset one stud space each side. Outer layer joints covered with paper tape and two coats of joint compound. Exposed screw heads covered with two coats of joint compound.

ACADIA DRYWALL SUPPLIES LTD — Type C

AMERICAN GYPSUM CO — Types AG-C

CERTAINTED GYPSUM INC — Type C

CONTINENTAL BUILDING PRODUCTS OPERATING CO, L L C — Types LGFC-C/A, Type LGFC6A

GEORGIA-PACIFIC GYPSUM L L C — Types DAPC, TG-C.

NATIONAL GYPSUM CO — Types eXP-C, FSK, FSL, FSMR-C, FSW-C, FSW-G, FSW-3, and FSW-8

PABCO BUILDING PRODUCTS L L C, DBA PABCO GYPSUM — Types PG-C, 5/8 in. Type C.

THAI GYPSUM PRODUCTS PCL — Type C

4A. **Gypsum Board*** — (As an alternate to Item 4) - 5/8 in. thick, 4 ft. wide, paper surfaced, applied vertically and fastened to the studs and plates with with 1 in. long Type S steel screws starting at 2 in. from the top and the bottom, and spaced at 8 in OC.

5. **Batts and Blankets*** — (optional) — Mineral wool or glass fiber batts partially or completely filling stud cavity. Any mineral wool or glass fiber batt material bearing the UL Classification Marking as to Fire Resistance.

5A. **Fiber, Sprayed*** — As an alternate to Batts and Blankets (Item 5) — (100% Borate Formulation) — Spray applied cellulose material. The fiber is applied with water to completely fill the enclosed cavity in accordance with the application instructions supplied with the product with a nominal dry density of 2.7 lb/ft³. Alternate Application Method: The fiber is applied without water or adhesive at a nominal dry density of 3.5 lb/ft³, in accordance with the application instructions supplied with the product.

U S GREENFIBER L L C — INS735 & INS745 for use with wet or dry application. INS765LD and INS770LD are to be used for dry application only.

5B. **Fiber, Sprayed*** — As an alternate to Batts and Blankets (Item 5) and Item 5A - Spray applied cellulose insulation material. The fiber is applied with water to interior surfaces in accordance with the application instructions supplied with the product. Applied to completely fill the enclosed cavity. Minimum dry density of 4.3 pounds per cubic ft.

NU-WOOL CO INC — Cellulose Insulation

5C. **Fiber, Sprayed*** — As an alternate to Batts and Blankets (Item 5) - Spray applied cellulose fiber. The fiber is applied with water to completely fill the enclosed cavity in accordance with the application instructions supplied with the product. The minimum dry density shall be 4.30 lbs/ft³.

INTERNATIONAL CELLULOSE CORP — Celbar-RL

*** Indicates such products shall bear the UL or cUL Certification Mark for jurisdictions employing the UL or cUL Certification (such as Canada), respectively.**

Last Updated on 2015-10-13

[Questions?](#)

[Print this page](#)

[Terms of Use](#)

[Page Top](#)

© 2015 UL LLC

The appearance of a company's name or product in this database does not in itself assure that products so identified have been manufactured under UL's Follow-Up Service. Only those products bearing the UL Mark should be considered to be Certified and covered under UL's Follow-Up Service. Always look for the Mark on the product.

UL permits the reproduction of the material contained in the Online Certification Directory subject to the following conditions: 1. The Guide Information, Assemblies, Constructions, Designs, Systems, and/or Certifications (files) must be presented in their entirety and in a non-misleading manner, without any manipulation of the data (or drawings). 2. The statement "Reprinted from the Online Certifications Directory with permission from UL" must appear adjacent to the extracted material. In addition, the reprinted material must include a copyright notice in the following format: "© 2015 UL LLC".